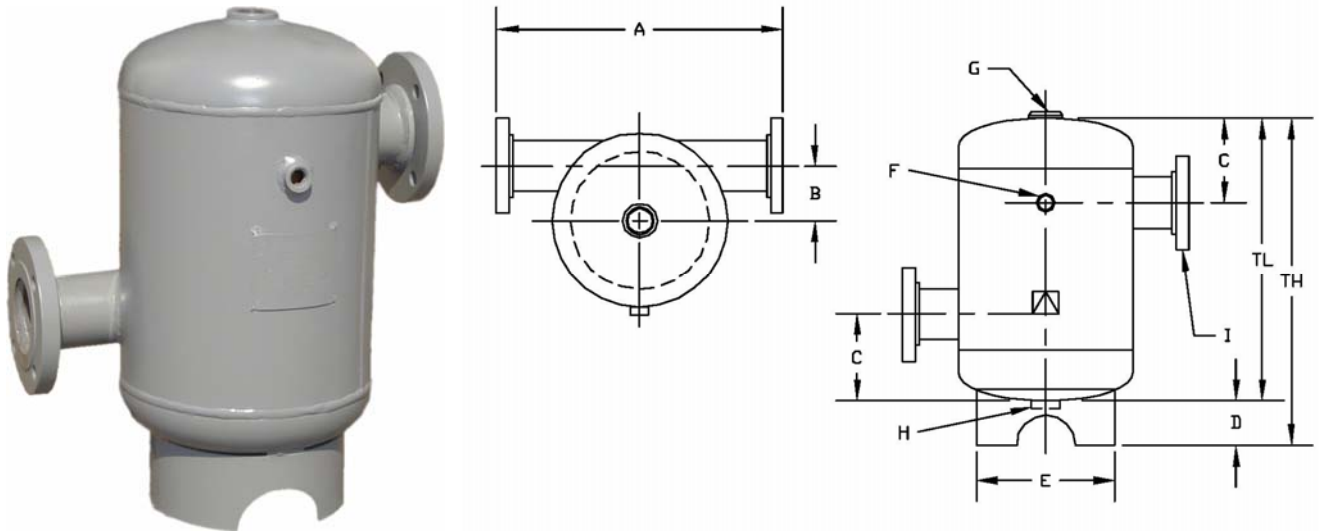


# PENWAY

## Air Separator



**Description:** Air Separator used for removal of entrained air in hydronic and pumping systems

**Specifications:**

- Built to ASME Code Section VIII
- Carbon Steel
- Basing Support
- 150 PSI Working Pressure
- Grey Primer
- In/Out on ASL002 & ASL0025 are male threaded pipe connections

DESCRIPTION				DIMENSIONS (INCHES)					OPENINGS					WT.
PART #	DIA	TL	TH	A	B	C	D	E	F	G	H	I		
ASL002	12	19 ½	22 ½	16 5/8	4 5/16	5 ½	3	9 ½	½	1 ¼	1	2 NPT	45	
ASL0025	12	21	23 ½	16 5/8	4 1/16	6 ¼	2 ½	9 ½	½	1 ¼	1	2 ½ NPT	42	
ASL003	12	20 ½	23 ½	19 ¾	3 ¾	6 ¼	2 ½	9 ½	½	1 ¼	1	3 FLG	52	
ASL004	14	29	32	21 ¾	4 ¼	9 1/8	3	11 ½	½	1 ½	2	4 FLG	94	
ASL005	14	29	32	21 ¾	3 ¾	9 1/8	3	11 ½	½	1 ½	2	5 FLG	116	
ASL006	20	41	44	28	6 ¼	13 ¼	3	18	½	2	2	6 FLG	201	
ASL008	20	41	44	28	5 3/16	13 ¼	3	18	½	2	2	8 FLG	296	
ASL010	30	58	60 ½	41	9 1/8	19	2 ½	24	½	2	2	10 FLG	560	
ASL012	30	58	60 ½	41	8 1/8	19	2 ½	24	½	2	2	12 FLG	665	
ASL014	36	75 ½	78	46 3/8	10 3/16	22	2 ½	30	½	2	2	14 FLG	910	
ASL016	48	100	108	60	12 ½	30	8	39	½	2	2	16 FLG	2200	
ASL018	54	116	124	66	13 5/8	33	8	45	½	2	2 ½	18 FLG	2500	
ASL020	60	130	138	72	16	35	8	49	½	2	2 ½	20 FLG	3800	
ASL024	72	152	160	84	19	40	8	55	½	2	2 ½	24 FLG	7000	