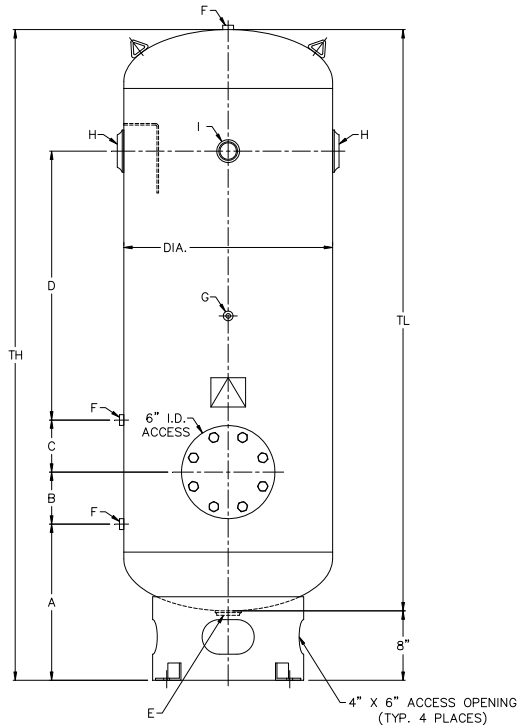


PENWAY

Vacuum Receivers 60 – 400 Gallons



Description: Industrial Vacuum Receiver

Specifications: Built to ASME Code Section VIII
Rated to 150 PSI & Full Vacuum
National Board Registered
Carbon Steel
Basing Support
Grey Primer

DESCRIPTION					DESIGN PRESSURE	DIMENSIONS (INCHES)				OPENINGS					
PART #	GAL	DIA	TL	TH		A	B	C	D	E	F	G	H	I	WT
A7060	60	20	48	56	150 PSI & F.V.	17	6	6	14	2	½	¼	3 NPT	1 ½	260
A7080	80	20	63	71	150 PSI & F.V.	17	6	6	29	2	½	¼	3 NPT	1 ½	295
A7120	120	24	67	75	150 PSI & F.V.	18	6	6	31	2	½	¼	3 NPT	1 ½	360
A7240	240	30	84	92	150 PSI & F.V.	19	6	6	44	2	½	¼	6 FLG	1 ½	554
A7400	400	36	93	101	150 PSI & F.V.	21	6	6	50	2	½	¼	6 FLG	1 ½	565